

# PCA-RP Cooling Only

## R407c Ceiling Suspended System

New Models

- > Split system comprising of ceiling suspended indoor unit, outdoor unit and wall mounted control panel
- > Indoor unit designed for direct ceiling suspension
- > Flush to wall installation for concealment of service connections
- > Electronic control includes learning defrost, fault finding diagnostics, low ambient fan speed control and anti-phase/single phase protection



Technical Information >>

### PCA-RP - INDOOR UNITS

MODEL REFERENCE		PCA-RP50GA	PCA-RP60GA	PCA-RP71GA	PCA-RP100GA	PCA-RP125GA	PCA-RP140GA
CAPACITY (kW)	Cooling (nominal)	5.35	6.6	7.45	9.6	12.3	14.2
	Cooling (UK)	4.8	5.95	6.7	8.65	11.05	12.8
SHF (nominal)		0.72	0.75	0.73	0.76	0.77	0.74
AIRFLOW (m <sup>3</sup> /min)	Lo-Mi1-Mi2-Hi	10-11-12-13	14-15-16-18	14-15-16-18	20-21-23-25	27-30-32-34	27-30-32-34
PIPE SIZE mm(in)	Gas	15.88 (5/8")	15.88 (5/8")	15.88 (5/8")	19.05 (3/4")	19.05 (3/4")	19.05 (3/4")
	Liquid	9.52 (3/8")	9.52 (3/8")	9.52 (3/8")	9.52 (3/8")	9.52 (3/8")	9.52 (3/8")
NOISE (dBA)	Lo-Mi1-Mi2-Hi	37-38-40-42	37-39-41-43	37-39-41-43	40-41-43-45	41-43-45-46	42-44-46-48
DIMENSIONS (mm)	Width	1000	1310	1310	1310	1620	1620
	Depth	680	680	680	680	680	680
	Height	210	210	210	270	270	270
WEIGHT (kg)		27	34	34	37	43	45
ELECTRICAL SUPPLY		Fed by Outdoor Unit	Fed by Outdoor Unit	Fed by Outdoor Unit	Fed by Outdoor Unit	Fed by Outdoor Unit	Fed by Outdoor Unit
PHASE		Single	Single	Single	Single	Single	Single
FUSE RATING (BS88) – HRC (A)		6	6	6	6	6	6
INTERCONNECTING CABLE No. CORES		4	4	4	4	4	4

### PU-P - OUTDOOR UNITS

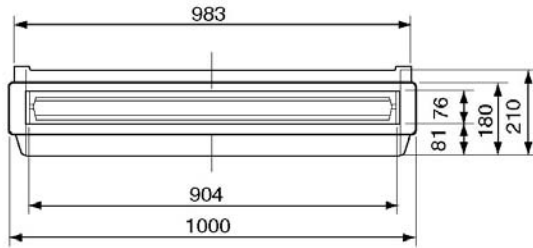
MODEL REFERENCE		PU-P50VGAA	PU-P60VGAA	PU-P71VGAA/YGAA	PU-P100YGAA	PU-P125YGAA	PU-P140YGAA
NOISE (dBA)		48	48	49	51	55	57
WEIGHT (kg)		74	79	79	97	125	125
DIMENSIONS (mm)	Width	900	900	900	900	1050	1050
	Depth	330 + 20	330 + 20	330 + 20	330 + 20	330 + 20	330 + 20
	Height	855	855	855	1260	1260	1260
ELECTRICAL SUPPLY		220-240v, 50Hz	220-240v, 50Hz	220-240v, 50Hz / 380-415v, 50Hz	380-415v, 50Hz	380-415v, 50Hz	380-415v, 50Hz
PHASE		Single	Single	Single / 3	3	3	3
SYSTEM POWER INPUT (kW) (nominal)		2.35	2.62	3.37	3.62	4.91	5.89
	(UK)	2.00	2.23	2.86	3.08	4.17	5.01
STARTING CURRENT (A)		62	77	93 / 47	49	65.5	74
SYSTEM RUNNING CURRENT (A)		10.67	12.43	15.34 / 5.82	6.24	8.61	10.04
FUSE RATING (BS88) – HRC (A)		16	25	32 / 16	20	20	25
MAINS CABLE No. Cores		3	3	3 / 5	5	5	5
MAX PIPE LENGTH (m)		40	50	50	50	50	50
MAX HEIGHT DIFFERENCE (m)		40	50	50	50	50	50
CHARGE R407c (kg)		2.6	3.1	3.3	4.0	4.6	4.9

Notes: All units are charged to 20m (50-60) and 30m (71-140) pipe length.

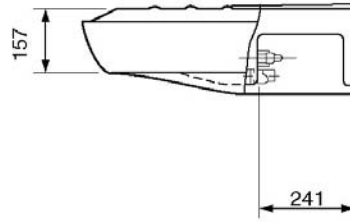
## INDOOR UNIT PCA-RP50GA

For PCA-RP100-140GA schematics please see page 71

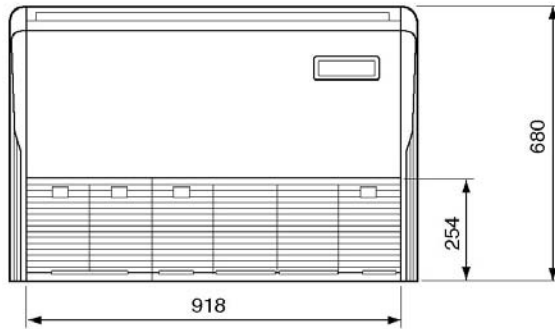
Front View >



Side View >

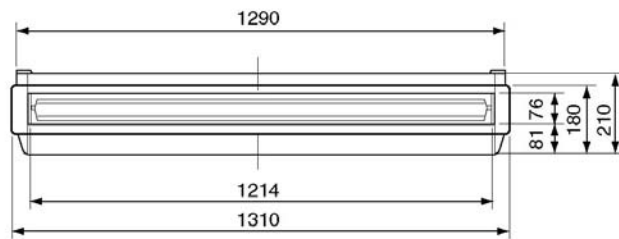


Lower View >

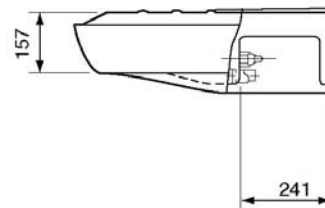


## INDOOR UNIT PCA-RP60-71GA

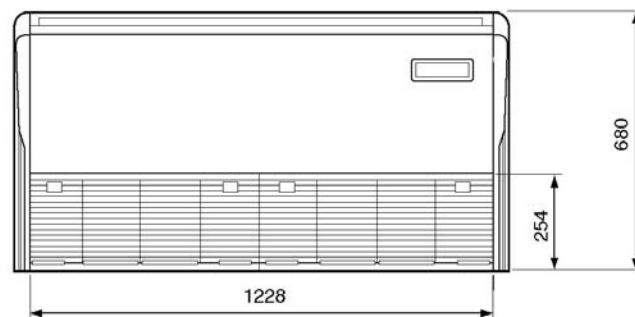
Front View >



Side View >



Lower View >



**This pdf has been downloaded from the website of :**

“Supplying and installing the latest in air conditioning technology”

**° Celsius**  
**air conditioning**

Celsius Air Conditioning Ltd, 1 Well Street, Heywood, Greater Manchester OL10 1NT

 01706 367 500  07000 CELSIUS  01706 367 355  sales@celsiusair.co.uk  www.celsiusair.co.uk

**www.celsiusair.co.uk**