

PEAD-RP Power Inverter Heat Pump

R410A Ceiling Concealed Ducted System

New Series



Technical Information >>

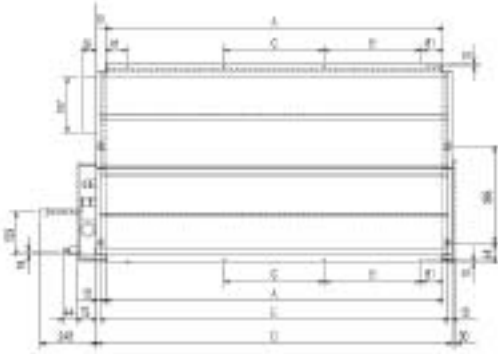
PEAD-RP - INDOOR UNITS		PEAD-RP1.6EA	PEAD-RP2EA	PEAD-RP2.5EA	PEAD-RP3EA	PEAD-RP4EA	PEAD-RP5EA	PEAD-RP6EA
MODEL REFERENCE								
CAPACITY (kW)	Heating (nominal)	4.1 (1.6-5.2)	6.0 (2.5-7.3)	7.0 (2.8-8.2)	8.0 (3.5-10.2)	11.2 (4.5-14.0)	14.0 (5.0-16.0)	16.0 (5.0-18.0)
	Cooling (nominal)	3.6 (1.6-4.5)	4.9 (2.3-5.6)	6.0 (2.7-6.7)	7.1 (3.3-8.1)	10.0 (4.9-11.4)	12.5 (5.5-14.0)	14.0 (5.5-15.3)
	Heating (UK)	3.5 (1.35-4.4)	5.1 (2.15-6.2)	5.95 (2.4-6.95)	6.8 (3.0-8.65)	9.5 (3.85-11.9)	11.9 (4.25-13.6)	13.6 (4.25-15.3)
	Cooling (UK)	3.25 (1.45-4.05)	4.4 (2.05-5.05)	5.4 (2.45-6.05)	6.4 (2.95-7.3)	9.0 (4.4-10.25)	11.25 (4.95-12.6)	12.6 (4.95-13.75)
SHF (nominal)		0.88	0.82	0.79	0.83	0.83	0.83	0.82
COP / EER (nominal)		3.25 / 3.21	3.64 / 3.22	3.68 / 3.23	3.42 / 3.30	3.22 / 3.25	3.41 / 3.39	3.36 / 2.85
ENERGY LABEL	Heating/Cooling	C / A	A / A	A / A	B / A	C / A	B / A	C / C
AIRFLOW (m3/min)	Lo-Hi	11-14	13.5-17	17-21	20-25	27-34	33.5-42	36.5-46
PIPE SIZE mm(in)	Gas	12.7 (1/2")	12.7 (1/2")	15.88 (5/8")	15.88 (5/8")	15.88 (5/8")	15.88 (5/8")	15.88 (5/8")
	Liquid	6.35 (1/4")	6.35 (1/4")	9.52 (3/8")	9.52 (3/8")	9.52 (3/8")	9.52 (3/8")	9.52 (3/8")
EXTERNAL STATIC PRESSURE (Pa) Lo-Hi		30-70	30-70	30-70	70-130*1	70-130*2	70-130*3	70-130*3
NOISE (dBA) Lo-Hi (with optional motor)		34-38	36-40	37-41	37-41 (40-45)	41-46 (42-48)	44-50 (46-52)	46-51 (47-53)
DIMENSIONS (mm)	Width	935	935	1175	1175	1415	1415	1715
	Depth	700	700	700	740	740	740	740
	Height	295	295	295	325	325	325	325
WEIGHT (kg)		33	35	42	44	62	65	70
ELECTRICAL SUPPLY		Fed by Outdoor Unit	Fed by Outdoor Unit	Fed by Outdoor Unit	Fed by Outdoor Unit	Fed by Outdoor Unit	Fed by Outdoor Unit	Fed by Outdoor Unit
PHASE		Single	Single	Single	Single	Single	Single	Single
FUSE RATING (BS88) – HRC (A)		6	6	6	6	6	6	6
INTERCONNECTING CABLE No. CORES		4	4	4	4	4	4	4

Notes: External static pressure - (1.6/2/2.5 : 30 + 70Pa connections as standard) / (3/4/5/6 : 130Pa optional fan motor - *1 PAC-SK005MT-F, *2 PAC-SK004MT-F, *3 PAC-SK003MT-F).

PUHZ-RP - OUTDOOR UNITS		PUHZ-RP1.6VHA	PUHZ-RP2VHA	PUHZ-RP2.5VHA	PUHZ-RP3VHA	PUHZ-RP4VHA	PUHZ-RP5VHA	PUHZ-RP6VHA
NOISE (dBA)	Heating/Cooling	46 / 44	46 / 44	48 / 47	48 / 47	51 / 49	52 / 50	52 / 50
WEIGHT (kg)		45	45	75	75	121	121	121
DIMENSIONS (mm)	Width	800	800	950	950	950	950	950
	Depth	330 + 23	330 + 23	330 + 30	330 + 30	330 + 30	330 + 30	330 + 30
	Height	600	600	943	943	1350	1350	1350
ELECTRICAL SUPPLY		220-240v, 50Hz	220-240v, 50Hz	220-240v, 50Hz	220-240v, 50Hz	220-240v, 50Hz	220-240v, 50Hz	220-240v, 50Hz
PHASE		Single	Single	Single	Single	Single	Single	Single
SYSTEM POWER INPUT (kW)	Heating/Cooling (nominal)	1.26 / 1.12	1.65 / 1.52	1.90 / 1.86	2.34 / 2.15	3.48 / 3.08	4.11 / 3.69	4.76 / 4.91
	Heating/Cooling (UK)	1.12 / 0.95	1.47 / 1.29	1.69 / 1.58	2.08 / 1.83	3.10 / 2.62	3.66 / 3.14	4.24 / 4.18
STARTING CURRENT (A)		5	5	5	5	5	5	5
SYSTEM RUNNING CURRENT (A) Heating/Cooling		4.78 / 4.56	7.08 / 6.77	8.2 / 7.31	11.29 / 9.59	16.47 / 14.86	20.12 / 18.42	23.06 / 23.42
FUSE RATING (BS88) – HRC (A)		16	16	25	25	32	32	40
MAINS CABLE No. Cores		3	3	3	3	3	3	3
MAX PIPE LENGTH (m)		50	50	50	50	75	75	75
MAX HEIGHT DIFFERENCE (m)		30	30	30	30	30	30	30
CHARGE R410A (kg) - 30m		2.5	2.5	3.5	3.5	5.0	5.0	5.0

INDOOR UNIT PEAD-RP1.6-2.5EA

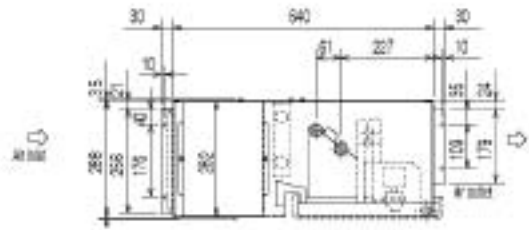
Upper View >



Front View >



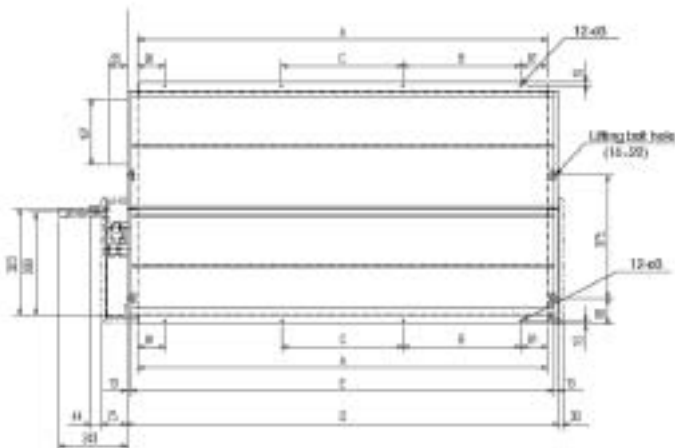
Side View >



Models	A	B	C	D	E
Size 1.6/2	772	305	-	830	804
Size 2.5	1012	280	290	1070	1044

INDOOR UNIT PEAD-RP3-6EA

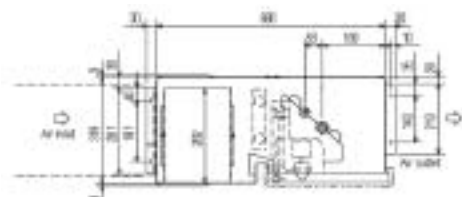
Upper View >



Front View >



Side View >



Models	A	B	C	D	E
Size 3	1012	280	290	1070	1044
Size 4/5	1252	360	370	1310	1284
Size 6	1552	460	470	1610	1584

This pdf has been downloaded from the website of :

“Supplying and installing the latest in air conditioning technology”

° Celsius
air conditioning

Celsius Air Conditioning Ltd, I Well Street, Heywood, Greater Manchester OL10 INT

 01706 367 500  07000 CELSIUS  01706 367 355  sales@celsiusair.co.uk  www.celsiusair.co.uk

www.celsiusair.co.uk